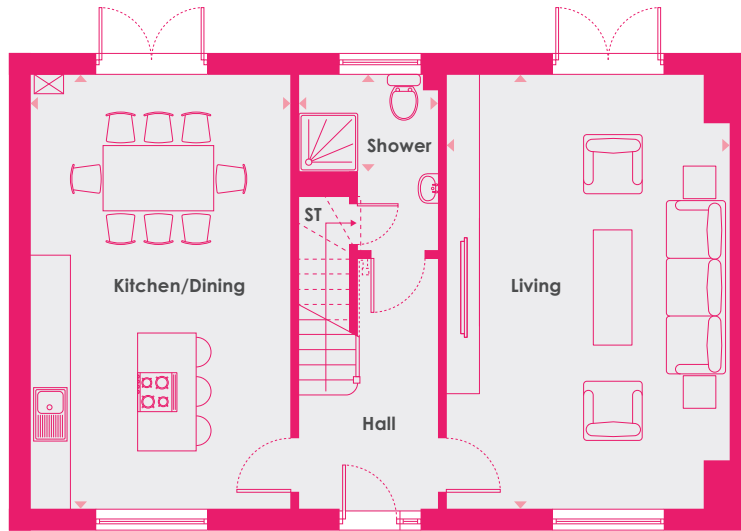


## The Cricklade ~ 4 bedroom home

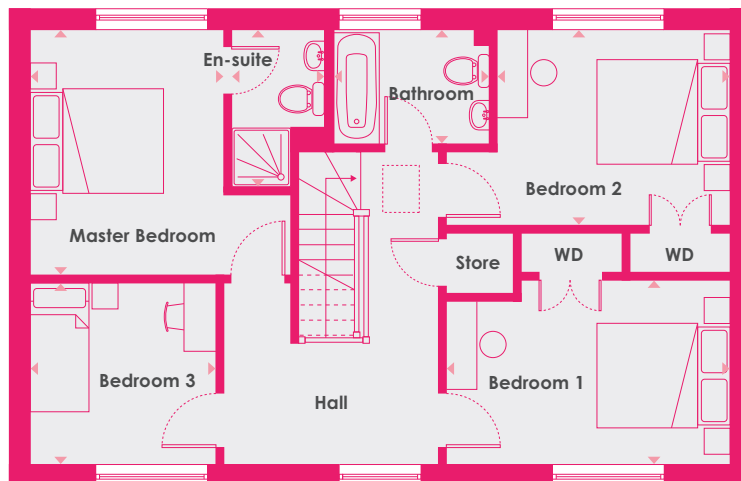
Plots: 57 and 58

**Internal area**

142 sq.m / 1,528 sq.ft



Ground Floor



First Floor

**Ground Floor**

Living	4.35m x 6.65m	21'8" x 14'2"
Kitchen/Dining	4.00m x 6.65m	21'8" x 13'0"
Shower	2.15m x 1.50m	7'0" x 4'9"

**First Floor**

Master Bedroom	3.75m x 2.95m	12'3" x 9'6"
En-suite	2.40m x 1.45m	7'8" x 4'6"
Bedroom 1	4.35m x 2.85m	14'2" x 9'3"
Bedroom 2	3.55m x 3.00m	11'7" x 9'8"
Bedroom 3	2.85m x 2.80m	9'3" x 9'1"
Bathroom	2.35m x 1.75m	7'7" x 5'6"